



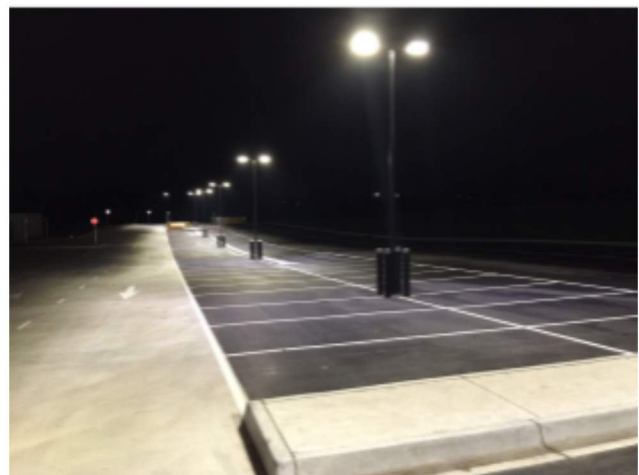
LED Straßenlampe IP66

- Farbe: Silbergrau
- ersatz für 150w alte Straßenlampe
- stabiles Material (Aluminiumgehäuse ADC12)
- Lichtquelle: PHILIPS Lumileds 3030
- Trafo: Meanwell Class I oder II
- Montage: Anschluss 40-60mm, mit/ ohne Schraube
- geeignet für Umgebungstemp. von -20°C bis 45°C
- optional: Dimmbarkeit / mit Sensor
- Gewicht: 7kg
- Gewährleistung: 5 Jahre
- Lieferzeit: nur auf Bestellung ca. 4 Wochen



220-240V 80x150° A+ 50000h 66

Leistung	Maße	Lichtstärke	lm/W	LED Chips	Trafo	Kelvin	Art.-Nr.	Preis
50w	65x24x14cm	7520lm	150 lm/W	Philips Lumileds	Meanwell	5000K	131165	131165
60w	65x24x14cm	9024lm	150 lm/W	Philips Lumileds	Meanwell	5000K	131155	131155



LED Street Light Installation Guide

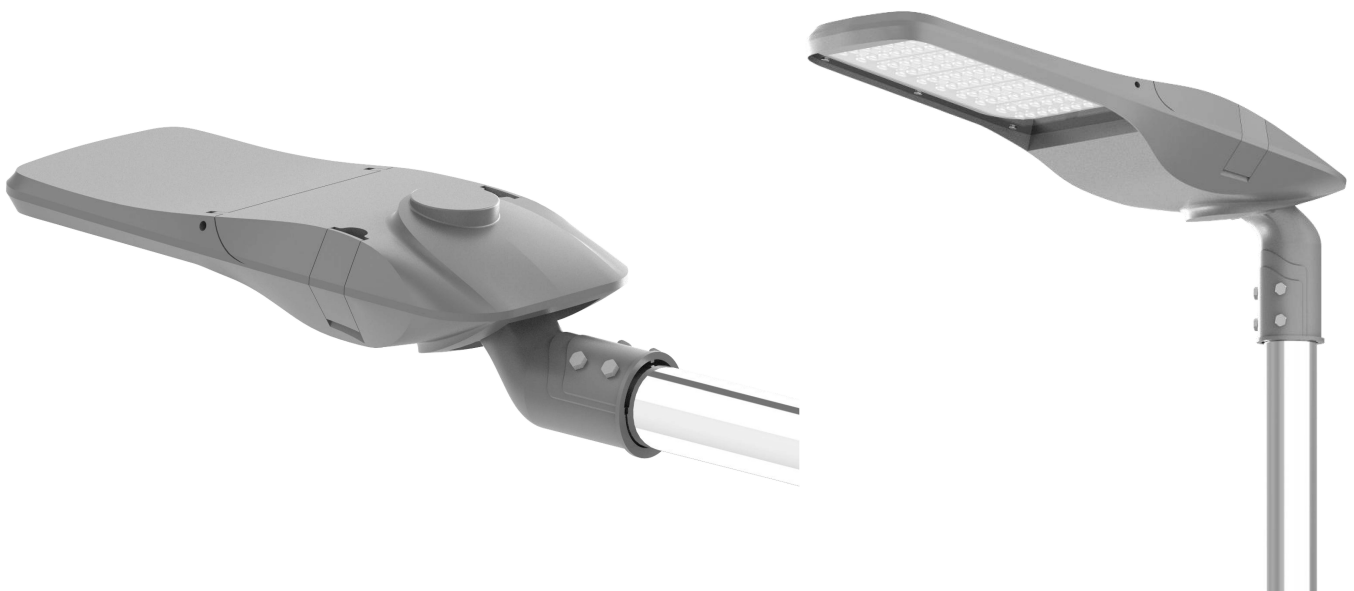
This procedure is designed as an installation aid. Skilled tradespeople that are familiar with general construction and electrical installation techniques should perform the installation. Licensed electricians should provide electrical installation connections. Installations and connections should be done in accordance with all national and local codes and permits. In no way is this document intended to construe warranty or fitness of use of the products described, nor is it intended to provide safety instruction for those installing the product.

WARNING

Before proceeding with installation or service maintenance of this product:

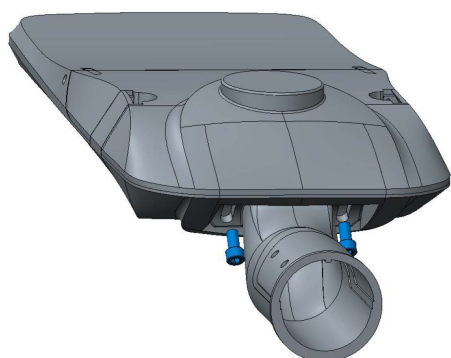
- Disconnect power to reduce electrical shock risk.
- Review the entire Installation Guide.
- Inspect this properly packaged product for any damage that may have occurred during transit.
- Verify product application complies with manufacturer design recommendations.
- Verify the availability of necessary tools and incidental material.
- Verify applicable code requirements. Field assembly and installation are subject to acceptance by local inspection authority.
- Appropriate safety equipment to be determined by end user, per applicable safety standards and precautions.

Luminaire Installation

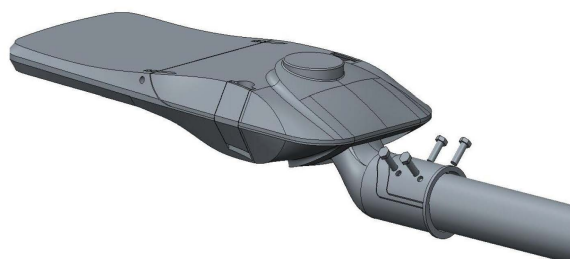
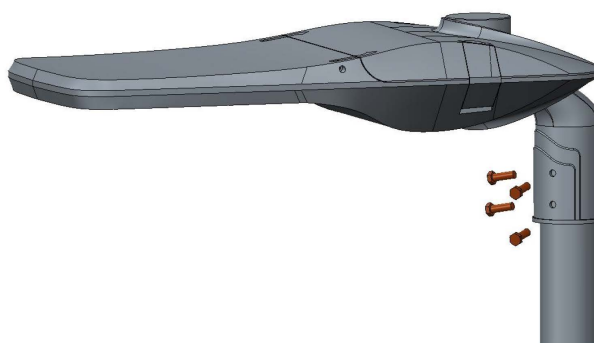


Standard Luminaire Installation

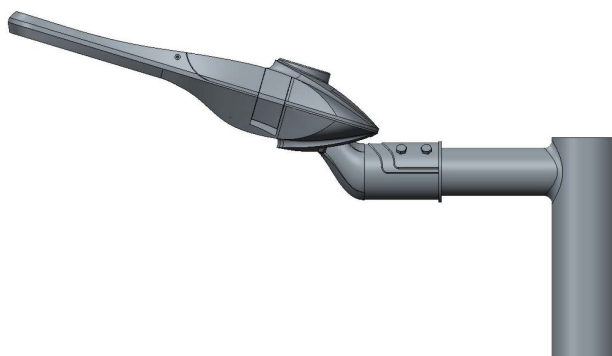
Step1-Remove the screws



Step2-Mount the lamp into a 60mm lamp post and lock the screws



Step3: Loosen the screw, adjust the angle required for the maximum angle is 15 °



Step4-Wiring, connect the L,N,GND wires on the lamp to the corresponding L,N,GND cables on the pole.

